



*Ventilation for passion*

SOLUTIONS FOR VENTILATION OF  
**LARGE INDUSTRIAL AND CIVIL STRUCTURES**

Follow us



# Contact us



Via Amerigo Vespucci, 22  
Calvisano (BS), Italy



+39 030 968 6428



[info@cmp-ventilation.com](mailto:info@cmp-ventilation.com)



[www.cmp-ventilation.com](http://www.cmp-ventilation.com)



@CMPindustrialvent



@cmp\_industrialvent



@cmp-industrial-vent

# Index

<b>1. Our values</b>	4 - 7
<b>2. Care for details</b>	8 - 9
<b>3. A correct ventilation</b>	10
3.1. Climate well-being and energy saving	11
<b>4. Reverso technology</b>	12 - 13
4.2. Advantages in different seasons	14 - 15
<b>5. Applications</b>	
5.1. Industrial facilities	16 - 17
5.2. Public and commercial spaces	18 - 19
5.3. Sport facilities	20 - 21
<b>6. Our team</b>	
6.1. Customization service	22 - 23
<b>7. Our products</b>	
7.1. Zefiro	26 - 27
7.2. Vertigo	28 - 29
7.3. Condor	30 - 31
7.4. Clamping kits	32 - 35

# Our values

**Competence, Modernity, Customer  
Respect and Social Sustainability.**



## Competence

We engage the best talents and professionals to provide our customers with the most advanced consultancy. Our expertise is based on a solid knowledge resulting from thousands of experiences carried out in Italy and in more than 50 countries around the world. We always exceed the expectations of our Customers.



## Customers needs

We give our customers a tailor-made plan and proposal based on the data taken from their project to deliver a precise and verifiable solution. This is supported by our wealth of previous studies and intensive research from around the world. We always demonstrate a relentless commitment to ensure that our customers receive the full benefit of the latest technologies.





We manage all stages of production and logistics paying attention to the environment through a reduced use of plastic and cardboard packaging.

**CMP designs and manufactures systems designed to last over time. Every entrepreneur knows the importance of these values, that's why relying on CMP is the right choice.**



## **Modernity**

Innovation is imbedded in the DNA of CMP. From our products, that represent the market's benchmark, followed by our constant evolution and always ensuring that no detail escapes being overlooked, to improve our performance and reliability. Resulting in products made to stand the test of time and to exceed our customer's expectations and requirements. Our products appearance is not to be easily mistaken for competitors, as our ZEFIRO range represents the pinnacle of the market technology. Attention to details is our distinguishing factor.



## **Social sustainability**

CMP has always been the pioneer of producing energy-saving motors for industrial ventilation. The path we have created is often taken for reference. Our products are still unmatched in the ratio of performance and consumption. Our focus is on solutions, which guarantee high performance, without the waste of energy.

A dark background featuring a faint world map. Numerous gold dots of varying sizes are scattered across the map, representing global locations. The dots are particularly dense in Europe and North America.

# **More than 100.000 fans sold**

**in Italy and in over  
50 Countries  
around the world.**

**Our passion is reflected in our Customers'  
satisfaction: our policy is to always be  
honest and reliable.**



**Our style says who we are  
today and who we want to  
be in the future.**



Passion



Reliability



Honesty



Customer  
satisfaction

Indian  
Ocean

AUSTRALIA



# Care for details

CMP designs and manufactures its own products: the entire study on the components takes place in our technical departments. The pursuit of excellence passes through attention to detail. ZEFIRO fan represents the best technology available: from the special brushless CMP motor, unique in its kind, to the wing profiles developed over the years and that allow you to guarantee the best performance in every context. The whole ZEFIRO line enjoys UL/CSA certification, which allows the sale and distribution in the United States of America and Canada: ZEFIRO, therefore, meets the highest standards of quality and safety.



Reverso



Detailed technical  
data sheets



UL/CSA  
Certification



Verified quality  
and safety



CMP achieves about a thousand installations per year. In order to propose the best ventilation system, CMP always takes into account the features of industrial and civil facilities according to the Customer's needs in terms of logistics and production.

CMP decided to keep the market updated with **precise** and **detailed** technical features of the products, getting **complete data sheets ready** in order to guarantee each customer **complete** and **exhaustive information**.



# A correct ventilation



It improves the well-being of employees in the workplace: thanks to the specially designed airfoil, CMP industrial fans allow a constant recirculation of air both during summer and winter season, for the benefit of workers.



It blends the air, even in large buildings, allowing to optimize the operation of the air conditioning and heating systems, with a consequent reduction in energy consumption.



It is a factor of competitive success in those industrial sectors where the presence of moisture is a source of risk, such as in the agri-food sector.



It reduces strong smells that, in certain environments, worsen the working conditions of employees.



It counteracts the presence of insects, especially in those production sectors where high hygiene standards are required.

## ■ Climate well-being and energy saving

Paying attention to the needs and working conditions of workers is a priority factor for companies. The law itself requires the employer to assess risks in the workplace, including those related to microclimatic conditions. As a result, a new scientific discipline called ergonomics developed in the last years with the aim of studying workplaces to preserve health, well-being and safety of employees. Due to their structural conformation or to specific processes, some working places facilitate a worsening of living conditions:

during summer, excessive heat worsens the quality of life of employees and reduces their productivity. Viceversa, during cold months, a great amount of electricity is required to warm large spaces. Using industrial fans on the other hand, helps to mix the air and allows economic savings for the company. CMP manufactures the most efficient, silent and resistant industrial fans on the market, with the aim of protecting the health, well-being and safety of workers.

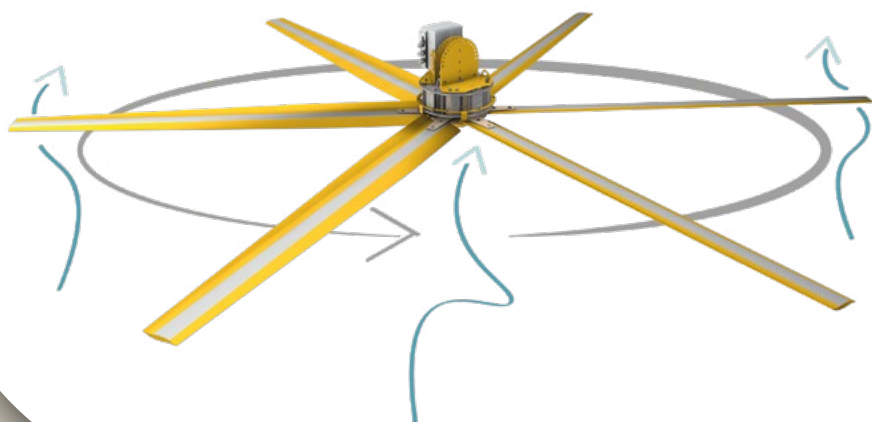


# Reverso technology



In order to meet the conflicting needs of summer and winter seasons, CMP has designed the Reverso line, a perfect solution for industrial spaces: in addition to the classic clockwise direction (the traditional flow conveyed downwards), with a simple gesture, the fan can also rotate counter clockwise, or in suction, with a constant but indirect air flow (image 1). Only the special airfoil of Reverso allows to obtain excellent results during all the year.





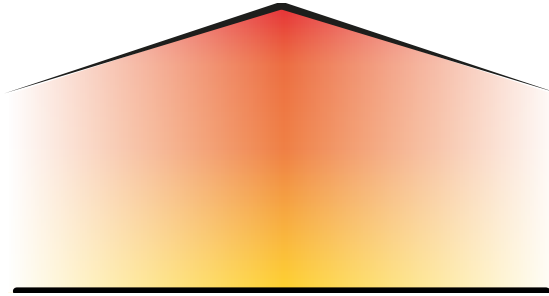
*image 1*

## ■ Advantages in different seasons

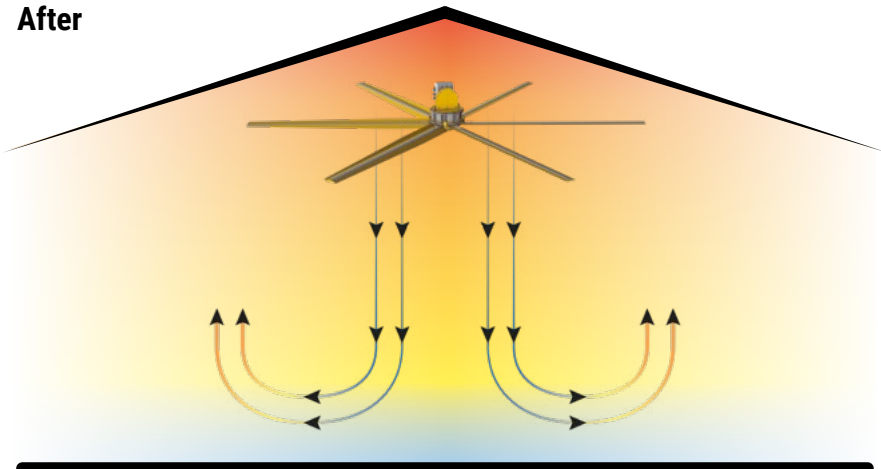
### Spring and summer

---

**Before**



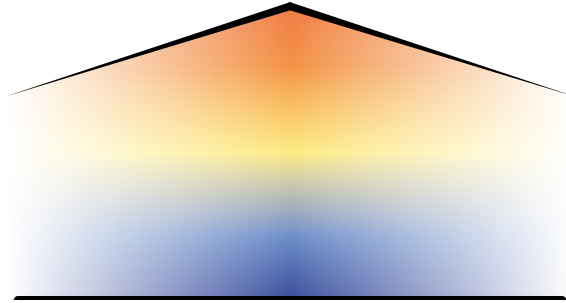
**After**



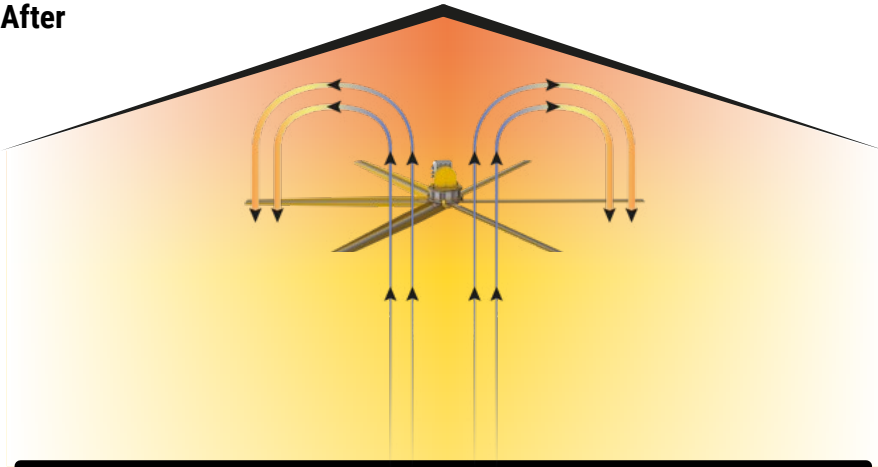
Those who work in large non-air-conditioned environments, know the inconveniences that summer brings with it: heat and humidity can become unbearable. CMP fans are indispensable to improve people's working conditions, their well-being and, consequently, the company productivity.

## Fall and winter

**Before**



**After**

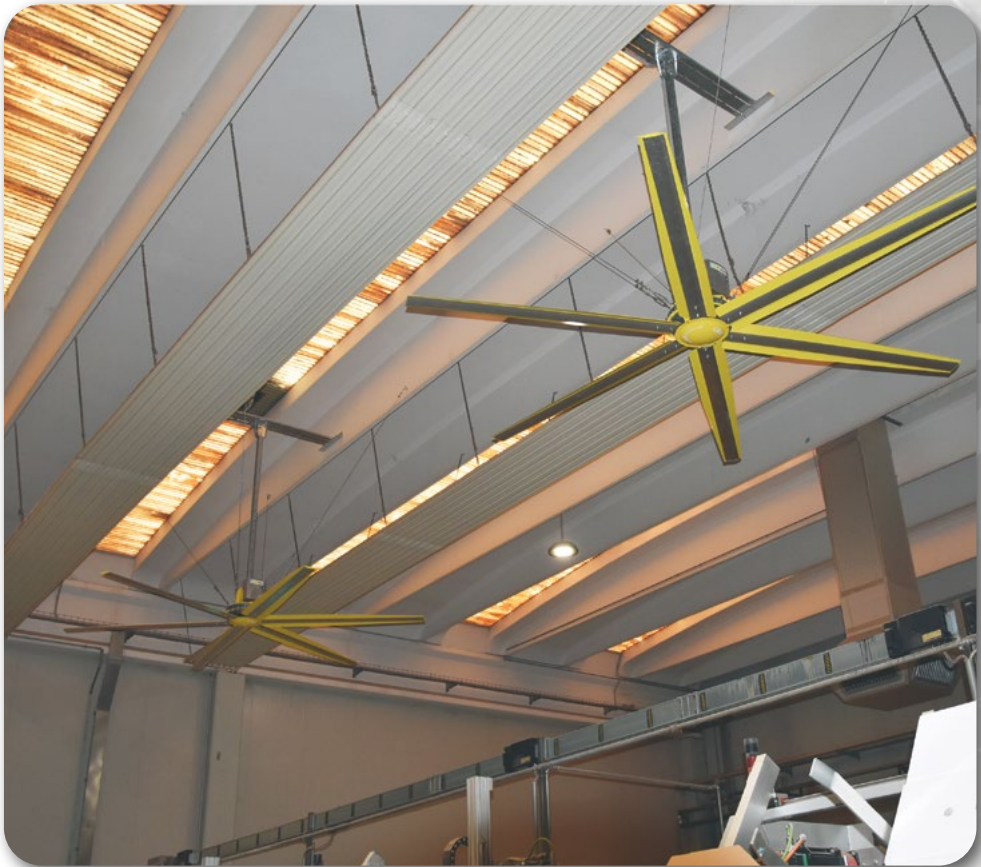


When temperature gets colder, with a simple gesture and thanks to the **Reverso** function, CMP fans mix warm stored under the ceiling with colder air on the ground, to even out the temperature inside large rooms. Warm is directed where needed, with a consequent saving on heating costs and the improvement of people's working and living conditions.

# Applications

## Industrial facilities

Our fans guarantee great comfort for all environments and considerable economic savings. In summer, the airflow generated by CMP fans creates a pleasant ventilation, which allows natural transpiration, facilitating people's work. In winter, on the other hand, CMP fans distribute warm within large spaces creating a uniform temperature and ensuring workers the comfort they need. That is why CMP fans are the right solution.







# Applications

## Public and commercial spaces

Temperature and air quality change rapidly when an environment fills up with people. CMP fans are an excellent solution for climate control in public spaces, commercial spaces and any other large environment. In fact, by mixing the air temperature, the costs of heating and air conditioning are reduced. In facilities without air conditioning, a single CMP fan can replace dozens of simple portable fans, using only a small percentage of the electricity consumed by them. CMP fans are the correct choice even in winter as they gently redirect warm air gathered below the ceiling to the ground.







# Applications

## Sport facilities

The air movement of air generated by a CMP fan inside the large non-air-conditioned sports centres, provides both athletes and spectators with a feeling of well-being. Whether it is appropriate to reduce or increase the temperature perceived, CMP fans are a benefit, guaranteeing considerable energy savings.



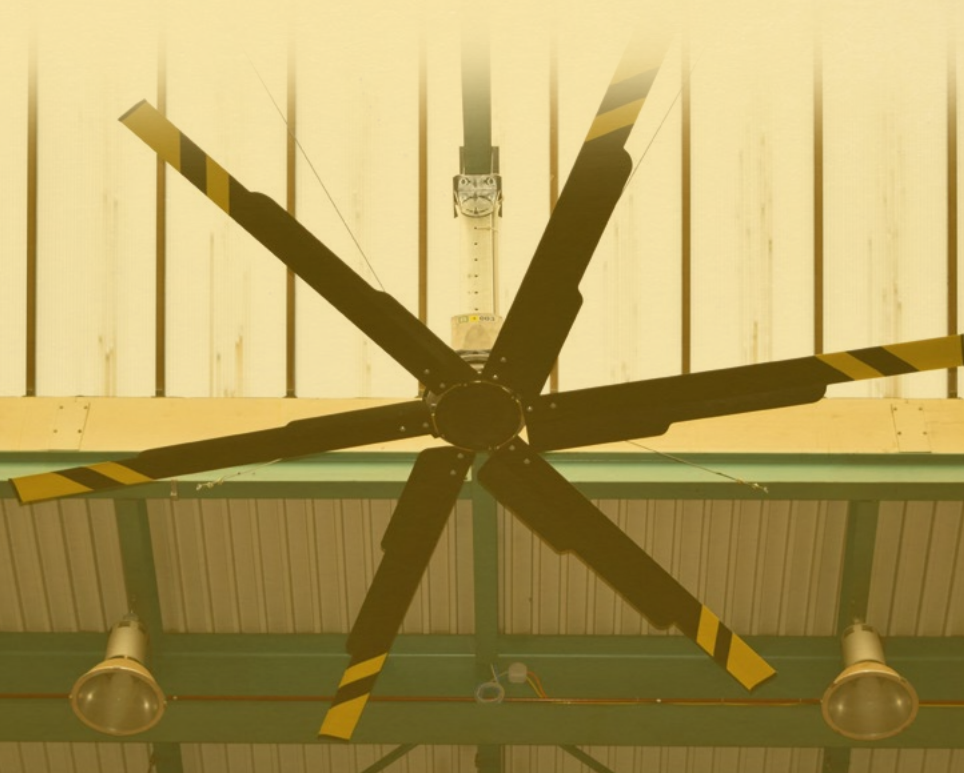
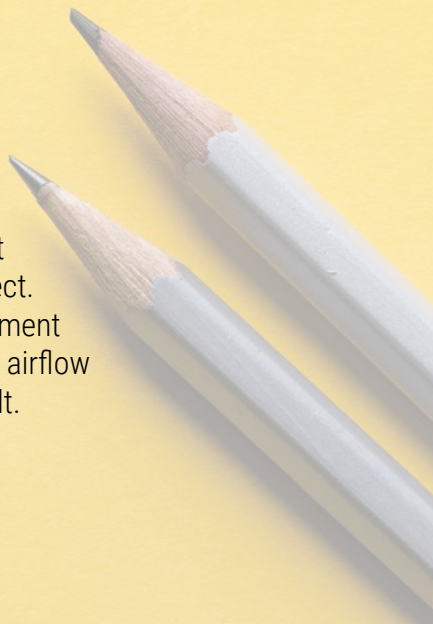




# Our team

## Customization service

CMP provides each customer with a series of customizations both from the point of view of functionality and aesthetics to meet even the most complex needs. Contact us to receive a free project. According to your specific needs, our technical department will size an efficient ventilation system to optimize the airflow within your structure and guarantee you the best result.





## Colour customization

CMP gives you the opportunity to customize your fan. Whether you are looking for a fan matched to the colour of your logo you or want a special customization, our company gives you the opportunity to do so. Our painting options will make sure that the fan is an integrated part of your company's spaces.



# Our products

---







# Zefiro

From Ø 4m a 7m

## High volume - Low speed

ZEFIRO fans are the flagship product of CMP 100% made in Italy.

CMP has been the first Italian company in the ventilation market to use the innovation given by the brushless motor (with permanent magnets) that uses an on-board drive for automatic and independent speed regulation. This innovation makes it possible to eliminate the gear motor present in classic asynchronous motors, thus reducing the presence of mechanical parts subject to wear. This results in lower maintenance requirements, greater efficiency and lower consumption.



Energy  
efficient



Permanent  
magnets



Reverso



Plug&Play



IP65



Silent

Inverter

Steel frame

Aluminium  
Reverso blades

Brushless engine



UL/CSA  
Certification



## Permanent magnets engine

The technology that offers you power, quietness, low power consumption and low maintenance cost.



## Inverter on board

The on-board inverter is more compact and lightweight, with a mains input voltage of 1 or 3 phases 50/60 hz. Plug & play solutions ensure installation speed and safety.



## Aluminium Reverso blades

The special aerfoil generates a greater air flow, which is homogenous according to the area that needs ventilation, ensuring very low electricity consumption.

Model	Diameter	Rotation speed	Blades	Weight	Voltage electrical supply	Power consumption
Zefiro	4 m	110 rpm	5/6	65 Kg	400V 3ph	0,5 kW
Zefiro Power	4 m	140 rpm	5/6	79 Kg	400V 3ph	1,1 kW
Zefiro Light	4,7 m	85 rpm	5/6	78 Kg	400V 3ph	0,6 kW
Zefiro	4,7 m	105 rpm	5/6	92 Kg	400V 3ph	0,9 kW
Zefiro Power	4,7 m	120 rpm	5/6	100 Kg	400V 3ph	1,2 kW
Zefiro Light	5 m	85 rpm	5/6	79 Kg	400V 3ph	0,6 kW
Zefiro	5 m	105 rpm	5/6	93 Kg	400V 3ph	1 kW
Zefiro Power	5 m	120 rpm	5/6	101 Kg	400V 3ph	1,35 kW
Zefiro Light	5,7 m	105 rpm	5/6	96 Kg	400V 3ph	0,6 kW
Zefiro	5,7 m	120 rpm	5/6	104 Kg	400V 3ph	1 kW
Zefiro Light	6 m	70 rpm	5/6	97 Kg	400V 3ph	0,7 kW
Zefiro	6 m	85 rpm	5/6	105 Kg	400V 3ph	1,1 kW
Zefiro Light	7 m	60 rpm	5/6	102 Kg	400V 3ph	0,8 kW
Zefiro	7 m	75 rpm	5/6	110 Kg	400V 3ph	1,12 kW

# Vertigo

da Ø 0,8m a 3m

## High volume - High speed

VERTIGO is the evolution of the Zefiro line and brings the benefits of ventilation to all structures that, for reasons of reduced height, cannot accommodate traditional horizontal fans. Its special conformation makes it flexible, allowing it to work horizontally or to be inclined at will, from 0° to 90°. The goal is to optimize the airflow even in the most complex situations. High yield, efficiency, low consumption and low maintenance derive directly from the Zefiro line.



Energy efficient



Permanent magnets



Reverso



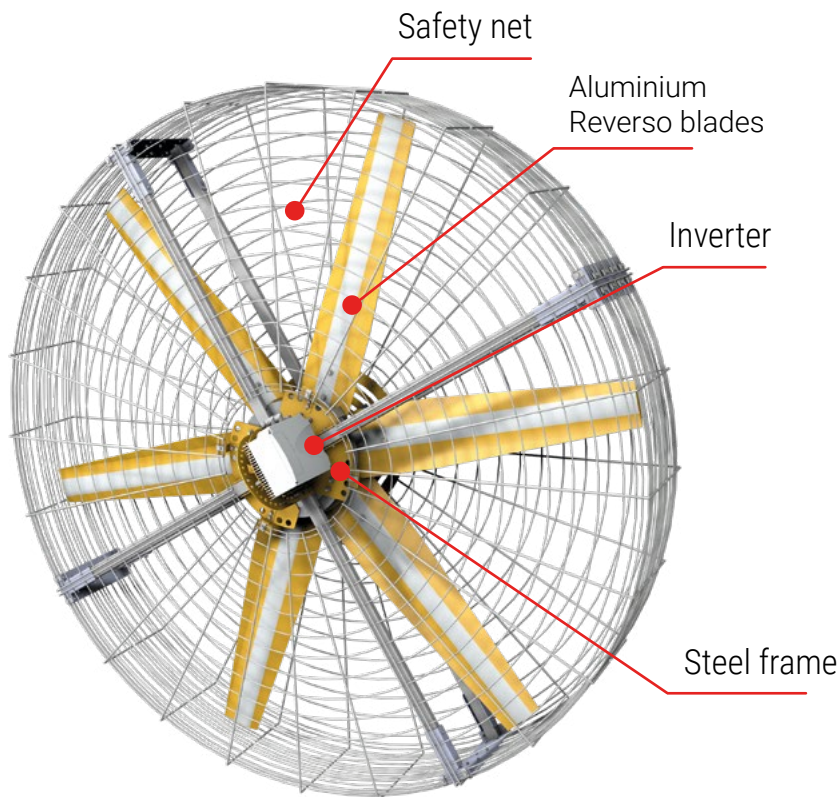
Plug&Play



IP65



Silent







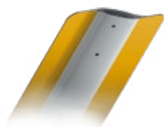
## Permanent magnets engine

The technology that offers you power, quietness, low power consumption and low maintenance cost.



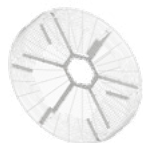
## Inverter on board

The on-board inverter is more compact and lightweight, with a mains input voltage of 1 or 3 phases 50/60 hz. Plug & play solutions ensure installation speed and safety.



## Aluminium Reverso blades

The special aerfoil generates a greater air flow, which is homogenous according to the area that needs ventilation, ensuring very low electricity consumption.



## Safety net

Simple assembly, lightweight and compact design.

Model	Diameter	Rotation speed	Blades	Weight	Voltage electrical supply	Power consumption
Vertigo	0,8m	900 rpm	7	30 Kg	400V 3ph	0,72 kW
Vertigo	1m	700 rpm	5	33 Kg	400V 3ph	0,65 kW
Vertigo	1,3m	700 rpm	3	38 Kg	400V 3ph	0,65 kW
Vertigo	1,6m	500 rpm	4	67 Kg	400V 3ph	1 kW
Vertigo	1,6m	500 rpm	4	102 Kg	400V 3ph	1 kW
Vertigo	1,6m	500 rpm	4	57 Kg	400V 3ph	1 kW
Vertigo	2,5m	230 rpm	6	190 Kg	400V 3ph	1,1 kW
Vertigo Power	2,5m	250 rpm	6	204 Kg	400V 3ph	1,7 kW
Vertigo	2,5m	230 rpm	6	64 Kg	400V 3ph	1,1 kW
Vertigo Power	2,5m	250 rpm	6	76 Kg	400V 3ph	1,7 kW
Vertigo	3m	165 rpm	6	68 Kg	400V 3ph	0,9 kW
Vertigo Power	3m	190 rpm	6	80 Kg	400V 3ph	1,3 kW

# Condor Ø 1,6m

## High volume - High speed

**CONDOR**, an innovative fan, is essential to reduce heat perception, to eliminate humidity, to dry, to store and to expel fumes and dust. The shift is facilitated by wheels equipped with position brake; the presence of a safety net "under 14", realized with robotic systems, guarantees the highest security standard. **CONDOR** does not require installation, it is a plug&play fan ready to use and as such it is perfect in every context.



Energy efficient



Permanent magnets



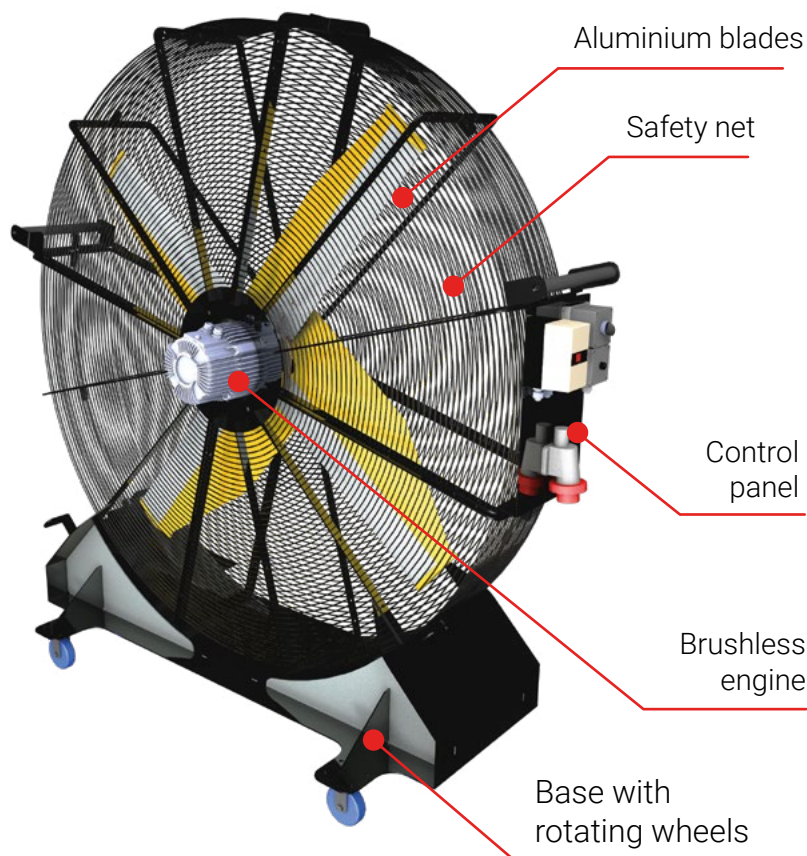
Plug&Play



IP65



Silent





### Permanent magnets engine

The technology that offers you power, quietness, low power consumption and low maintenance cost.



### Inverter on board

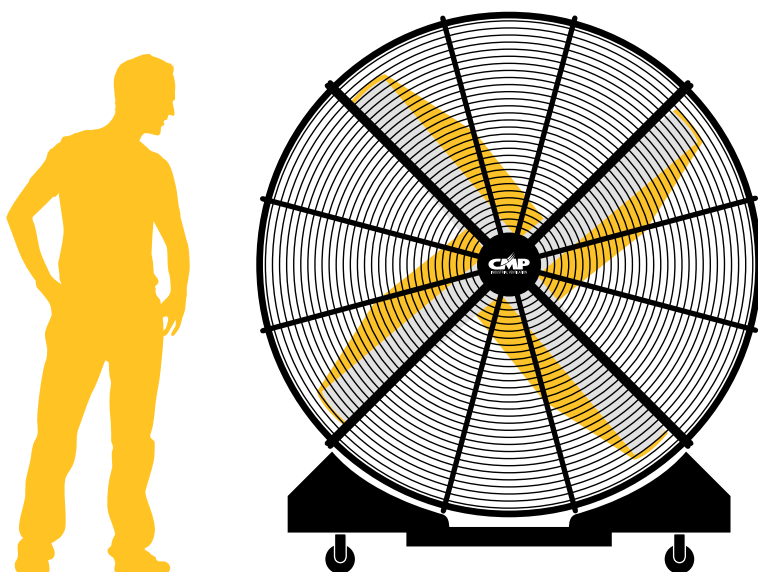
The on-board inverter is more compact and lightweight, with a mains input voltage of 1 or 3 phases 50/60 hz. Plug & play solutions ensure installation speed and safety.



### Aluminium blades

The special aerfoil generates a greater air flow, which is homogeneous according to the area that needs ventilation, ensuring very low electricity consumption.

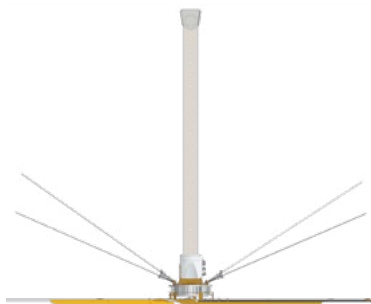
Model	Diameter	Rotation speed	Blades	Weight	Voltage electrical supply	Power consumption
Condor	1,6m	300 rpm	4	160 Kg	400V 3ph	0,25 kW



# Clamping kits

CMP designed different types of kits for fixing the fan to the ceiling or walls: the goal is to ensure a perfect installation in any environment, even in the most difficult and particular conditions. Our kits are designed and built with the best materials and meet the highest safety standards.

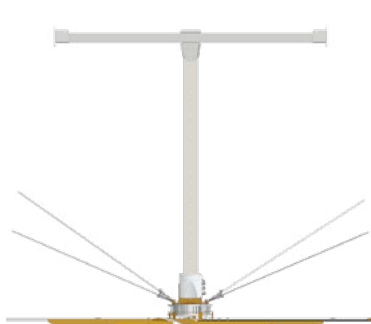
## **Wall clamping**



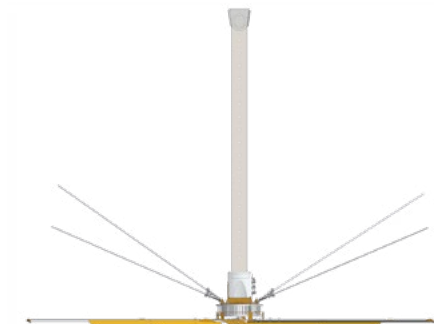
## **Metal strip clamping**



## **Tubular clamping**



## **Big clamping**





**Tubular bracket**



**Counterplate**



**Tubular bracket**



**Connecting tubular**



**Tubolare 3m**



**Bracket for metallic strip**



**6m tubular**



**Metal strip**



**L support**



**Telescopic tubular**



**Z support**



**Kit**







*Ventilation for passion*



For more information see our website  
***[www.cmp-ventilation.com](http://www.cmp-ventilation.com)***



Via Amerigo Vespucci, 22  
Calvisano (BS), Italy